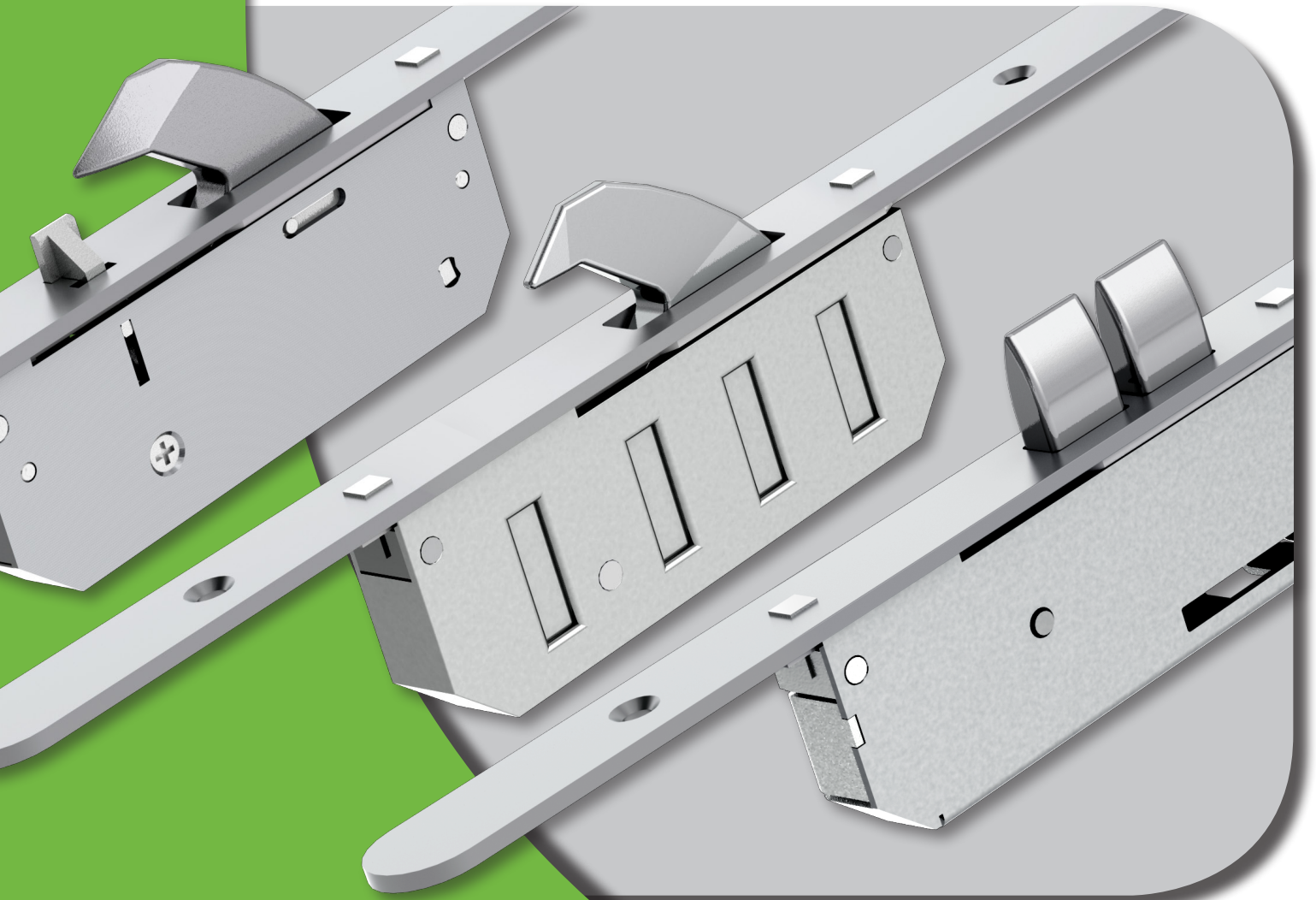


**BJ WALLER**  
ARCHITECTURAL IRONMONGERS



**BJ Waller**  
**Heritage Thunderbolt**

# Heritage Thunderbolt

Created for Security and fashion, designed to compliment the modern or traditional door

Modern Multi-Point Locking systems which provide higher levels of security and weather performance have traditionally not leant themselves to be used with ornate or architectural long bar pull door furniture and separate eye-level escutcheon which can be so common on Georgian and Edwardian doors and are now a fashion choice of consumers choosing a contemporary styled Timber or composite door.

The Thunderbolt Heritage is a Key Turn Activated Locking System which houses the euro profile locking cylinder at a similar height to a traditional round cylinder pull giving both the fabricator and the consumer a secure solution that also help to add "visual value" and style to their door.

The product like all of the Thunderbolt range features twin deadbolts in the upper and lower positions and the product features 5 deadbolts as standard.

The locking system is designed to technically complement doors made from all materials and it is especially competent when used with timber doors. The twin deadbolt design has up to 50% greater fitting tolerances and also allows for greater material movement associated with certain hardwoods.

The product also features a new ultra smooth Key Turn Activated gearbox. Designed and manufactured in Germany after an extensive Research and Development programme the lock is operated by turning the key 720° clockwise or anti-clockwise to simultaneously engage or disengage both the 20mm throw nickel plated alloy twin deadbolts and the nickel plated steel central deadbolt. The engineered alloy sprung latch can be disengaged by a further key turn.

Designed to complement a contemporary or traditional period door the product can be used with a period style ornate pull or a contemporary long bar handle and it especially dovetails well when used with the High Security Winkhaus Heritage Pull.



Secured by Design



Official Police Security Initiative



The security nickel plated steel twin deadbolts fully penetrate the heavy duty steel keeps and help prevent forcing apart of the door and frame. Thunderbolt Heritage is Police Secured By Design, PAS 24, SKG, and VdS accredited.



The high performance Key Turn Activated gearbox is tested to 100,000 cycles and offers the lowest possible operating forces.



Tested to PAS 24 the Thunderbolt Heritage twin deadbolts provide low operating forces and helps doors achieve a higher level of weather performance.



Winkhaus locks and keeps have a protective surface coating in excess of EN 1670: 2007 Grade 4 which is designated as 'Very high corrosion resistance'.



Heritage Lock is superbly engineered and manufactured in Germany. Established in 1854 Winkhaus is a market leader producing innovative security solutions to meet the challenges of tomorrows' rapidly changing security and ease of use requirements but at the same time empathising with the fine architectural needs of British and Irish heritage.



Thunderbolt Heritage has been designed to harmonise with the Winkhaus XR6-51 Kitemark profile cylinder (KM531333) and in combination with a security escutcheon meets PAS 24 and the highest TS007 3 Star security requirements.





# Heritage Thunderbolt

Created for Security and fashion, designed to compliment the modern or traditional door

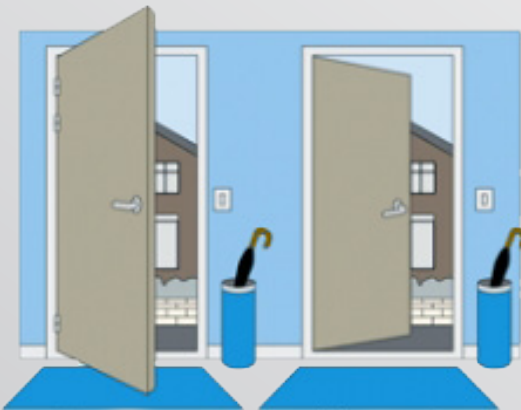
## A Highly Engineered Gearbox

- New and improved Smooth locking and unlocking via cylinders
- Vastly increased tolerance and strength of internal gear mechanism
- Internal Gears sintered with new materials used to ensure improved surfaces and edges on the gear teeth surface
- Easy operation low force latch and deadbolt retraction
- 30% increase in overall gearbox strength and durability
- A fully encased gearbox that eliminates the possibility of swarf entering the gearbox and affecting the smooth operation of the gears
- With integral screw holes to receive security escutcheon and/or bolt through handles

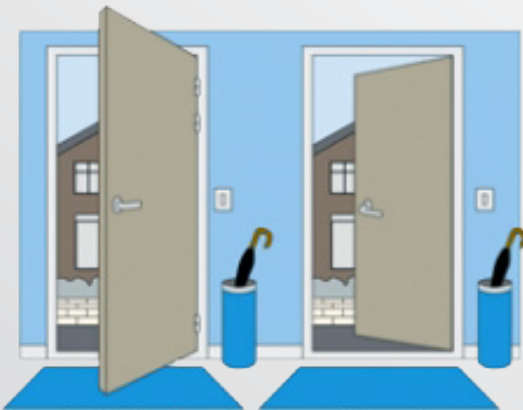
## BJ Waller Part Numbers:

BJ Waller Part No.	Description
23.630806.T	45mm Backset, Non Handed, Cylinder Operated Multi-Point Lock With High Cylinder (No Lift Action Required)
23.61006	Right Hand Silver Adjustable Keep To Suit a 44mm Door
23.61106	Left Hand Silver Adjustable Keep To Suit a 44mm Door
23.61206	Right Hand Silver Adjustable Keep To Suit a 56mm Door
23.61306	Left Hand Silver Adjustable Keep To Suit a 56mm Door
23.61406.E	Silver Adjustable Keeps for Deadbolt/Hook With a Flat Face Plate

## BJ Waller Handing Details:



LEFT HAND  
INWARDS OPENING      RIGHT HAND  
OUTWARDS OPENING



RIGHT HAND  
INWARDS OPENING      LEFT HAND  
OUTWARDS OPENING



Shoulder  
height  
locking

NEW



Specially designed twin nickel plated alloy deadbolts are chamfered to allow a high degree of fitting tolerance for door installation. In addition the deadbolt shape provides low operating forces and helps doors achieve a higher level of weather performance.

45° anticlockwise turn  
retracts latch

720° twin revolution  
throws and retracts  
centre deadbolt and  
twin deadbolts

**BJ Waller Ltd,  
20 Wilburton Road  
Stretham, Ely  
Cambridgeshire  
CB6 3LN  
Tel: 01353 647111  
Fax: 01353 648899  
Email: [sales@bjwaller.co.uk](mailto:sales@bjwaller.co.uk)  
Web: [www.bjwaller.co.uk](http://www.bjwaller.co.uk)**