



DOUBLE DOOR FAB LOCK

FAB LOCK

SHOOTBOLT KEEP RAIL

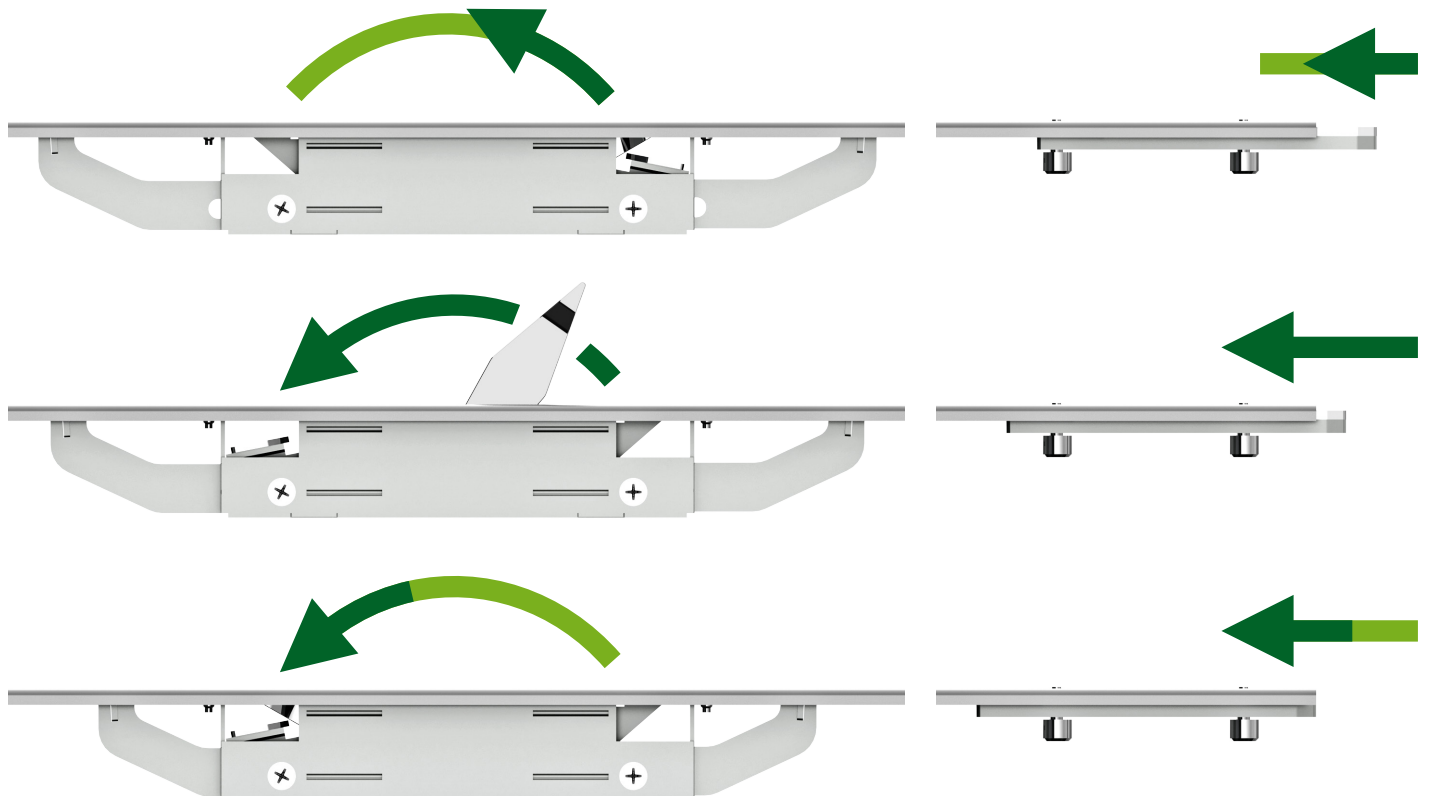
Specification For Doors 1853 - 2281mm High



The Winkhaus FAB slave door lock range provides a high security locking option WITHOUT the need for a security Kitemark cylinder, cylinder guard or a security handle. Operated by a flush, integrated two way lever the FAB slave lock throws two heavy duty 20mm shootbolts into the head and cill. Combined with the FGTE Multi-Point master lock the locking hooks penetrate the FAB Slave lock to secure the two leaves together. No additional hook keeps are required. Substantial shootbolt keeps have +/- 2mm of adjustment for ease of operation.

With a size range from 1853mm to 2281mm the flexibility is exceptional and is ideally suited to the trend towards taller French doors and for main entrance doors with a operating side panel. These types of doors are being increasingly specified for wheelchair access or for moving large pieces of furniture in or out of the building.

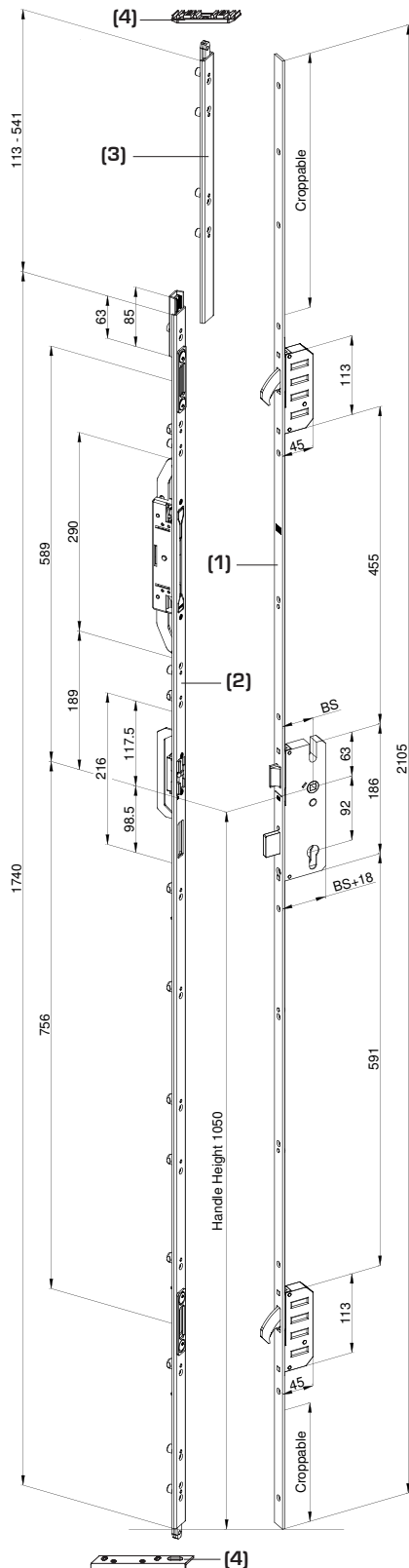
- An attractive alternative to normal slave door locks.
- Secure U26 keep rail with 20mm long laminated steel top and bottom shootbolts.
- Easily operated by the convenient operating lever.
- Quickly installed in the slave leaf of double doors [Requires doors with opposing eurogrooves].
- Removes the need to handle and cylinder.
- Ideal for double doors with irregular sash widths.
- Variants to suit Winkhaus standard, short and tall [3 Hook] locks.
- Integral bottom shootbolt giving 1050mm handle height.
- To suit sash heights 1853 - 2281mm.
- SKG **



FAB LOCK

SHOOTBOLT KEEP RAIL

Specification For Doors 1853 - 2281mm High



BJ Waller Part No.	Description
23.60106.E.T	45mm Backset , 5 Point Master Door Lock, 2105x20mm Face Plate, Square End
14.321302.T	1740mm Slave Leaf Bottom Shootbolt & Keep Rail, 1853 - 2281mm, RH
14.321202.T	1740mm Slave Leaf Bottom Shootbolt & Keep Rail, 1853 - 2281mm, LH
14.322002	256mm Shootbolt, can be cut to 113mm
14.322102	399mm Shootbolt, can be cut to 256mm
14.322202	541mm Shootbolt, can be cut to 399mm
23.60606	BZP Adjustable Slave Leaf Shoot Bolt Keeps For Top and Bottom

- The FAB flushbolt keep rail is designed for French Door systems with opposing eurogrooves
- Overall for screwing use min. Ø 4,0 x 40mm for lock and frame parts.

- 1) 23.6016.E.T Door Lock 45mm Backset
- 2) FAB Flushbolt keep rail
- 3) Shootbolt (croppable)
- 4) Shootbolt Keep

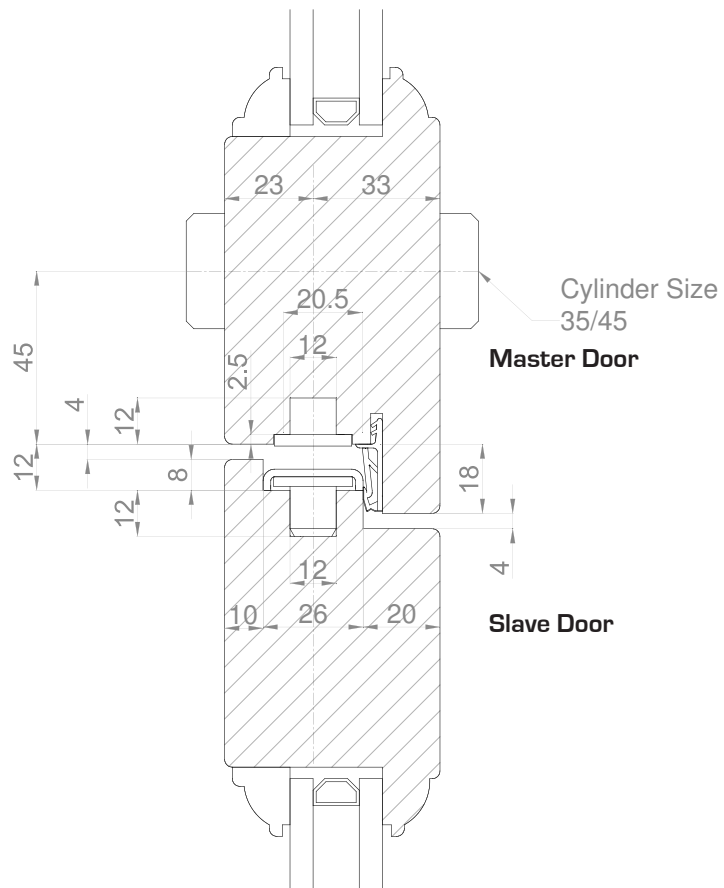


Image shown is a Right Hand Fab Lock

**BJ Waller Ltd,
20 Wilburton Road
Stretham, Ely
Cambridgeshire
CB6 3LN
Tel: 01353 647111
Fax: 01353 648899
Email: sales@bjwaller.co.uk
Web: www.bjwaller.co.uk**