



WINDOW
PRODUCTS
LIMITED

Tel: 01684 290944

Fax: 01684 276482

E: sales@gtwindowproducts.co.uk

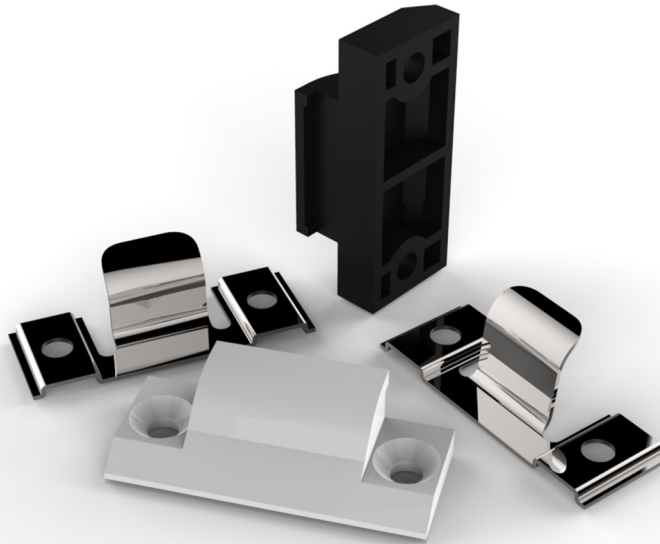
www.gtwindowproducts.co.uk




SASH-SEAL

GT Sash Seal is a spring device designed to improve the seal of a sash at the hinged side of a window.

The simple act of closing the window causes the unique sash spring to push against the frame wedge to ensure an efficient seal.

Totally universal with solutions for Timber, Aluminium and PVCu frames.



-  Fits any window that has a standard stack height
-  Can be used on PVCu, Timber and Aluminium
-  Save call out costs to leaking casement windows



SASH-SEAL

GT Sash Seal is a spring device designed to improve the seal of a sash at the hinged side of a window.

Consisting of one acetal moulding and one spring steel component designed to universally fit all 13mm and 17mm stack height systems.

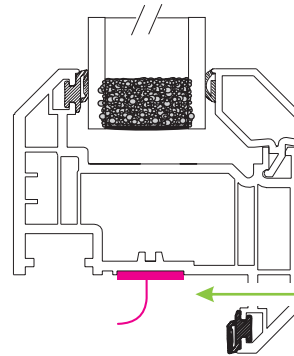
The simple act of closing the window causes the unique sash spring to push against the frame wedge to ensure an efficient seal.

Fits any window that uses standard stays.

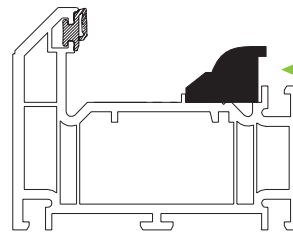
Accommodates the majority of current easy-clean and egress stays available.

Solution for PVCu, Timber and Aluminium.

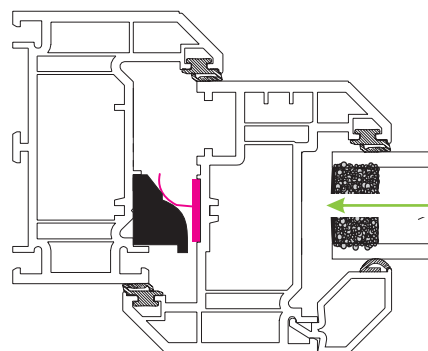
Saves call out costs for leaking casement windows.



Fit the sash spring to the sash on the centre line of the stay fixing area



Fit a frame wedge to the outer frame on the stay fixing area



It may be necessary to pack the sash/glass at this point shown

Parts required & codes:

- SS001 Standard Sash Spring
- SS002 White Wedge 13mm
- SS003 Black Wedge 13mm
- SS004 White Wedge 17mm
- SS005 Black Wedge 17mm
- SS006 Brown Wedge 17mm
- SS007 Tan Wedge 17mm
- SS008 Brown Wedge 13mm
- SS009 Tan Wedge 13mm
- SS100 Sash Spring Long

Typical positioning shown.

Locate the components on the stay fixing area as shown. This position is a universal fixing point and will enable the sash seal to be used on all PVCu, Timber and Aluminium frames.

One sash seal set will give adequate seal if fixed centrally on the hinge style.