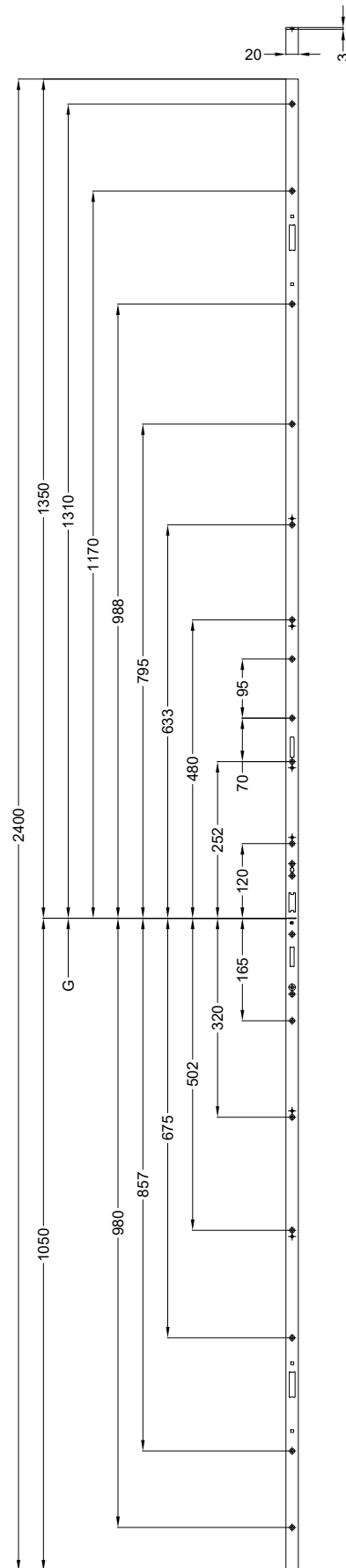
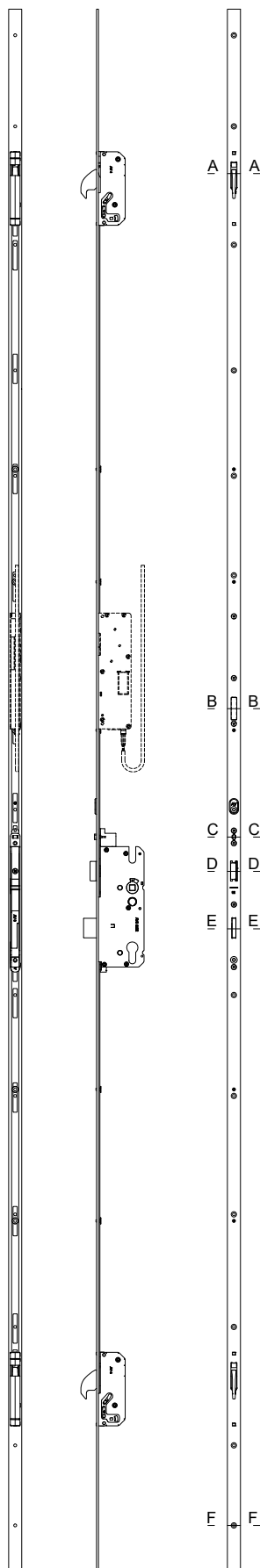
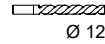


- D = Dornmaß / Backset / Fouillot / Aguja / Doornmaat
G = Griffhöhe / Handle position / Hauteur de poignée / La manilla / Krukhoogte
** = Kürzbar / Croppable / Recoupable / Acortable / Afkortbaar

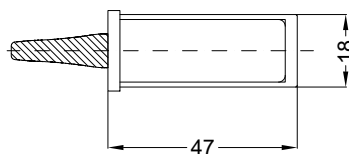
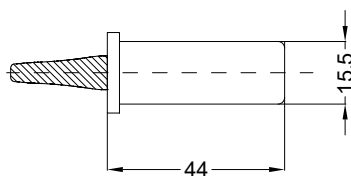


G = Griffhöhe / Handle position / Hauteur de poignée / La manilla / Krukhoogte

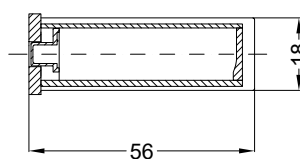
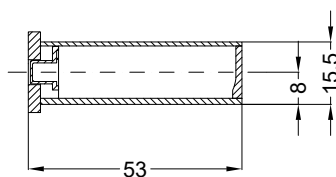




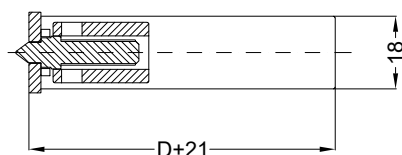
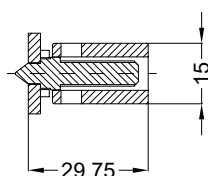
- D** = Dornmaß / Backset / Fouillot / Aguja / Doornmaat
G = Griffhöhe / Handle position / Hauteur de poignée / La manilla / Krukhoogte



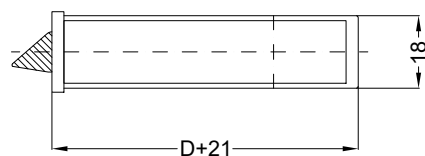
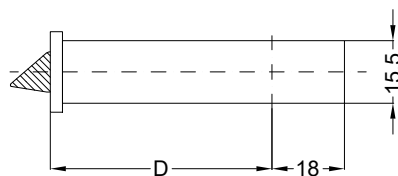
A - A



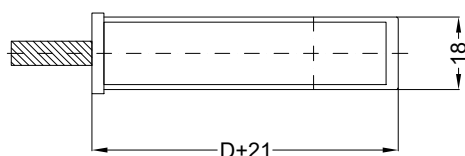
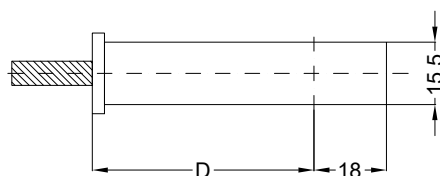
B - B



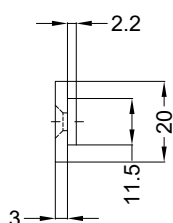
C - C



D - D



E - E



F - F

D = Dornmaß / Backset / Fouillot / Aguja / Doornmaat

Empfehlung Beschlagnut Holz / Recommendation fitting groove timber /
Recommandation rainure bois / Recomendación canal de herraje madera /
Aanbeveling passende groef hout
T-AV4-F2069 .../D A9 92/... M2

